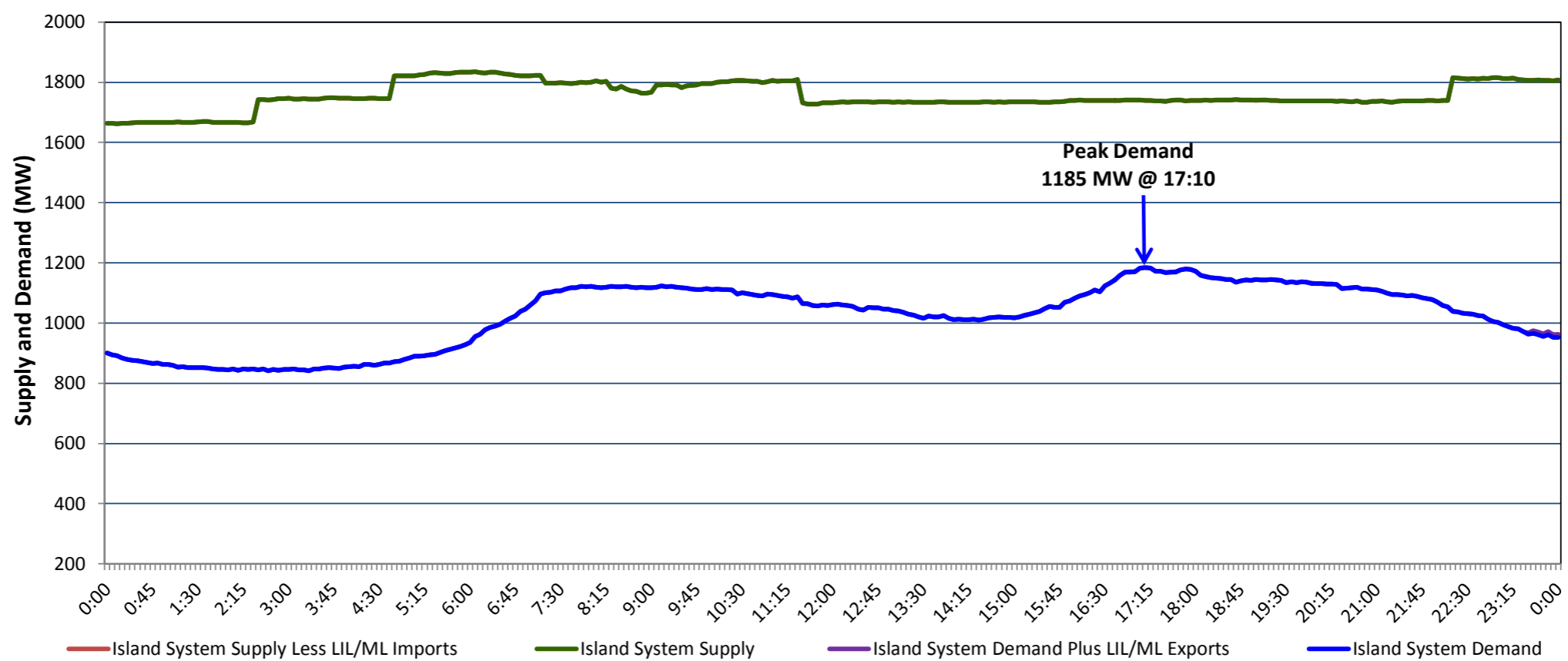


**Newfoundland Labrador Hydro (NLH)  
Supply and Demand Status Report Filed Thursday, November 22, 2018**

**Section 1  
Island Interconnected System Supply, Demand & Exports  
Actual 24 Hour System Performance For Wednesday, November 21, 2018**



**Supply Notes For November 21, 2018**

- 1,2
- A As of 2017 hours, November 03, 2018, Holyrood Unit 1 unavailable due to planned outage 40 MW (170 MW).
  - B As of 0729 hours, November 09, 2018, Stephenville Gas Turbine available at 25 MW (50 MW).
  - C At 0226 hours, November 21, 2018, Bay d'Espoir Unit 5 available (76.5 MW).
  - D At 0445 hours, November 21, 2018, Bay d'Espoir Unit 6 available (76.5 MW).
  - E At 0712 hours, November 21, 2018, Hardwoods Gas Turbine available at 25 MW (50 MW).
  - F At 0818 hours, November 21, 2018, Hardwoods Gas Turbine unavailable due to planned outage 25 MW (50 MW).
  - G At 0905 hours, November 21, 2018, Hardwoods Gas Turbine available at 25 MW (50 MW).
  - H At 1130 hours, November 21, 2018, Bay d'Espoir Unit 1 unavailable (76.5 MW).
  - I At 1700 hours, November 21, 2018, Bay d'Espoir Unit 1 unavailable due to planned outage (76.5 MW).
  - J At 2214 hours, November 21, 2018, Bay d'Espoir Unit 1 available (76.5 MW).

**Section 2  
Island Interconnected Supply and Demand**

Thu, Nov 22, 2018	Island System Outlook <sup>3</sup>	Seven-Day Forecast	Temperature (°C)		Island System Daily Peak Demand (MW)	
			Morning	Evening	Forecast	Adjusted <sup>7</sup>
Available Island System Supply: <sup>5</sup>	1,820 MW	Thursday, November 22, 2018	1	0	1,310	1,215
NLH Island Generation: <sup>4</sup>	1,475 MW	Friday, November 23, 2018	-5	-5	1,525	1,427
NLH Island Power Purchases: <sup>6</sup>	140 MW	Saturday, November 24, 2018	-2	-2	1,415	1,319
Other Island Generation:	205 MW	Sunday, November 25, 2018	-3	0	1,300	1,205
ML/LIL Imports:	- MW	Monday, November 26, 2018	-3	-2	1,315	1,220
Current St. John's Temperature & Windchill:	0 °C	Tuesday, November 27, 2018	0	0	1,350	1,254
7-Day Island Peak Demand Forecast:	1,525 MW	Wednesday, November 28, 2018	0	2	1,350	1,254

**Supply Notes For November 22, 2018**

- 3
- Notes:
1. Generation outages for running and corrective maintenance are included. These are not unusual for power system operations. They generally do not impact customer supply. The power system operators schedule outages to system equipment whenever possible to coincide with periods when customer demands are low and sufficient supply reserves are available. However, from time to time equipment outages are necessary and reserves may be impacted.
  2. Due to the Island system having no synchronous connections to the larger North American grid, when there is a sudden loss of large generating units there may be a requirement for some customer's load to be interrupted for short periods to bring generation output equal to customer demand. This automatic action of power system protection, referred to as under frequency load shedding (UFLS), is necessary to ensure the integrity and reliability of system equipment. Under frequency events have typically occurred 5 to 8 times per year on the Island Interconnected System and the resultant customer load interruptions are generally less than 30 minutes. With the activation of the Maritime Link frequency controller during the winter of 2018, UFLS events have occurred less frequently.
  3. As of 0800 Hours.
  4. Gross output including station service at Holyrood (24.5 MW) and improved NLH hydraulic output due to water levels (35 MW).
  5. Gross output from all Island sources (including Note 4).
  6. NLH Island Power Purchases include: CBPP Co-Gen, Nalcor Exploits, Rattle Brook, Star Lake, Wind Generation and capacity assistance (when applicable).
  7. Adjusted for curtailable load, market activities and the impact of voltage reduction when applicable.

**Section 3  
Island Peak Demand Information  
Previous Day Actual Peak and Current Day Forecast Peak**

Wed, Nov 21, 2018	Actual Island Peak Demand <sup>8</sup>	17:10	1,185 MW
Thu, Nov 22, 2018	Forecast Island Peak Demand		1,310 MW

Notes: 8. Island Demand / LIL / ML Exports (where applicable) is supplied by NLH generation and purchases, plus generation owned and operated by Newfoundland Power and Corner Brook Pulp & Paper (Deer Lake Power, DLP).